

Desktop Engraver **DE-3**

Featuring laser-pointing technology, ethernet connectivity, automatic depth regulation and other intelligent enhancements, the DE-3 is the smartest, most intuitive desktop rotary engraver on the market.

Specifications		
Work Table Size	12.0079 in x 9.05512 in (305 mm x 230 mm)	
Maximum Work Area (Work Envelope)	X:	12 in (305 mm)
	Y:	9.1 in (230 mm)
	Z:	1.6 in (40 mm)
XYZ Axis Drive System	Stepper motor, 3-axis simultaneous control	
Operating Speed	XY Axis : 0.1~60 mm/sec. Z Axis : 0.1~30mm/sec.	
Software resolution	0.01 mm/step	
Mechanical Resolution	XYZ Axis: 0.00125 mm/step	
Spindle Motor	Brushless DC Motor	
Spindle Speed	5,000~20,000 rpm	
Tool Loading	Cutter Holder, Collet Type	
Maximum Material Thickness	40 mm (38 mm when using the nose cone)	
Connection	USB	
	Ethernet (10 BASE-T/100 BASE-TX)	
Machine Language	RML-1	
Power Supply	Voltage and Frequency	AC100V ± 10%, 50/60Hz (Overvoltage category: Category II, IEC60664-1)
	Rated Current	1.0 A
Power Consumption	80 W	
Operating Noise	While Operating: 60 dB (or less), Standby: 40 dB (or less)	
Machine Weight	75 lbs (35 kg)	
Installation Environment	Indoor use, altitude: 2000 m or less Temperature 5 to 40°C, humidity 35 to 80% (no dew condensation)	
	Environment pollution degree: 2	
Bundled Accessories	Power cord, power adapter, USB cable, nose cone unit (resin/metal components), nose unit set screw (fixing screw, spring), spare set screw (for cutter holder), Solid collet (ø 3.175 mm), spanner wrench, hex wrench, hex driver, adhesive sheet, dust collector adapter, DGSHAPE Software Package CD, Setup Guide	

DGSHAPE by Roland

At the forefront of advanced machine manufacturing for 37-years, Roland continues to provide practical and reliable technology with unmatched service and support.

DGSHAPE by Roland further builds on this reliability promise by improving user experience with fast and effortless engraving machines, designed for those just starting out and for engraving experts looking for a more intuitive solution.

Imagine. 

AUTHORISED DEALER:



Gerrie - 079 520 5431

NW - 073 953 4075

Stefan - 079 527 1334

www.WIPdigital.com

Large Format Printers
Print & Cut Machines
UV Printers
Sublimation Printers
Vinyl Cutters
Dental Machines
Engravers
Heat Presses
Laminators

DGSHAPE

DE-3

Desktop Rotary Engraver

OVER 30 YEARS OF ENGRAVING EXPERTISE

Roland continues to break new ground in rotary engraving with the DGSHAPE DE-3 that features laser-pointing technology, ethernet connectivity, automatic depth regulation and other intelligent enhancements.



by 

Precise. Productive. Profitable.

Automated features offer a simplified set-up and operation to quickly and precisely engrave delicate and tough materials.



Fast Production

Advanced surface detection enables quick and simple set-up, while a 20,000 rpm DC brushless motor engraves at top speed.



Laser Pointer

Automatically define the origin point and view a path preview for accurate personalization and engraving every time.



User Replaceable Spindle

Easily-applied nose cones avoid scratches to delicate materials and deliver consistently precise results.

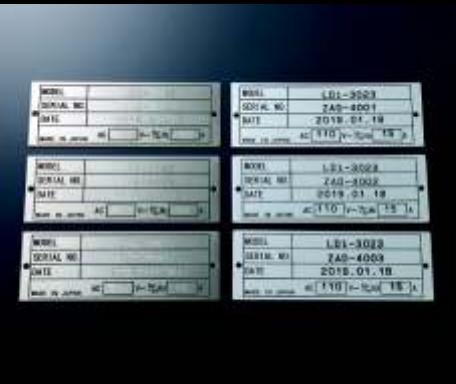
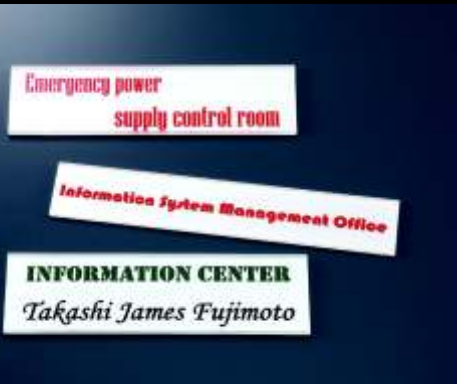


Ethernet Connection

Machine operation can be managed remotely—offering LAN network connectivity for multiple machine engraving.

Discover More Applications with DGSHPAE Engraving

Customize brass, aluminum, copper, engraving plastic, wooden items and more, with the speed, precision and ease of the powerful, compact DE-3.



*Optional vice shown



Open Architecture and New Software

The DE-3 works out-of-the-box with popular engraving software, industry standard tools, and materials. It also features Dr. Engrave Plus software that offers new user advantages.



Supports AI files and standard graphic/vector data.



Import Excel and CSV files for nametags, serial numbers, and other variable data projects.



Enables standard engraving as well as surface levelling and hole drilling.



Handy Panel Control

Without the need for computer setup, users can store job data and perform machine operations.



Reliability and Support

As the world leader in desktop rotary engraving devices, Roland DG offers users unmatched product performance and reliability, backed by industry-leading service and support. The DE-3 comes with a comprehensive One-Year Trouble-Free Warranty.