

Desktop Engraver **DE-3**

Featuring laser-pointing technology, ethernet connectivity, automatic depth regulation and other intelligent enhancements, the DE3 is the smartest, most intuitive rotary engraver on the market.



DE-3

DGS SHAPE Engraver

Specifications		
Work Table Size	305 mm x 230 mm	
Maximum Work Area (Work Envelope)	X: 305 mm	
	Y: 230 mm	
	Z: 40 mm	
XYZ Axis Drive System	Stepper motor, 3-axis simultaneous control	
Operating Speed	XY Axis : 0.1~60 mm/sec. Z Axis : 0.1~30mm/sec.	
Software resolution	0.01 mm/step	
Mechanical Resolution	XYZ Axis: 0.00125 mm/step	
Spindle Motor	Brushless DC Motor	
Spindle Speed	5,000~20,000 rpm	
Tool Loading	Cutter Holder, Collet Type	
Maximum Material Thickness	40 mm (38 mm when using the nose cone)	
Connection	USB	
	Ethernet (10 BASE-T/100 BASE-TX)	
Machine Language	RML-1	
Power Supply	Voltage and Frequency	AC100V ± 10%, 50/60Hz (Overvoltage category: Category II, IEC60664-1)
	Rated Current	1.0 A
Power Consumption	80 W	
Operating Noise	While Operating: 63 dB (or less), Standby: 40 dB (or less)	
Machine Weight	35 kg	
Installation Environment	Indoor use, altitude: 2000 m or less Temperature 5 to 40°C, humidity 35 to 80% (no dew condensation)	
	Environment pollution degree: 2	
Bundled Accessories	Power cord, power adapter, USB cable, nose cone unit (resin/metal components), nose unit set screw (fixing screw, spring), spare set screw (for cutter holder), Solid collet (ø 3.175 mm), spanner wrench, hex wrench, hex driver, adhesive sheet, dust collector adapter, DGS SHAPE Software Package CD, Setup Guide	

DGS SHAPE Corporation

At the forefront of advanced machine manufacturing for 37-years, Roland provides practical and reliable technology with unmatched service and support.

DGS SHAPE, A Roland Company, further builds on this reliability promise by improving user experience with fast and effortless engraving machines, designed for those just starting out and for engraving experts looking for a more intuitive solution.

OVER 30 YEARS OF ENGRAVING EXPERTISE

DGS SHAPE continues the legacy of Roland engraving with a new model that features laser-pointing technology, ethernet connectivity, automatic depth regulation, and other intelligent enhancements. The DE-3 is the smartest, most intuitive rotary engraver on the market.



Gauteng and surrounding areas

- | | | | | |
|--|--|---|--|--|
| 📍 Gerrie Badenhorst
☎ 079 520 5431
✉ gerrie@wipdigital.com | 📍 NW van der Walt
☎ 073 953 4075
✉ nw@wipdigital.com | 📍 Stefan van Zyl
☎ 079 527 1334
✉ stefan@wipdigital.com | 📍 Trevor Neal
☎ 082 908 0583
✉ trevor@wipdigital.com | 📍 Juandré Milligan
☎ 077 601 9473
✉ juandre@wipdigital.com |
|--|--|---|--|--|

🌐 www.wipdigital.com | [f wipdigitalsa](https://www.facebook.com/wipdigitalsa) | [i wipdigitalsolutions](https://www.instagram.com/wipdigitalsolutions)

by Roland

Built to Make Engraving Easy

Automated features offer a simplified set-up and operation to quickly and precisely engrave delicate and tough materials.



Fast Production

Advanced surface detection enables quick and simple set-up, while a 20,000 rpm DC brushless motor engraves at top speed.



Laser Pointer

Automatically define the origin point and view a path preview for accurate personalization every time.



User Replaceable Spindle

Easily-applied nose cones can be added to the spindle to precisely regulate engraving depth and avoid material scratching.

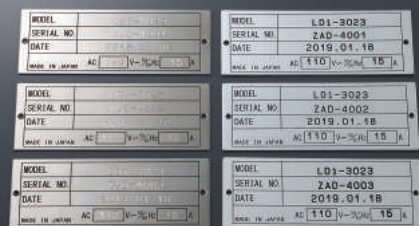


Ethernet Connection

Machine operation can be managed remotely—offering LAN network connectivity for multiple machine engraving.

Discover More Applications with DGSHAPE Engraving

Customize brass, aluminum, copper, engraving plastic, wooden items and more, with the speed, precision and ease of the powerfully compact DE-3.



Open Architecture and New Software

The DE-3 works out-of-the-box with popular engraving software, industry standard tools, and materials. It also features Dr. Engrave Plus software that offers new user advantages.



Supports AI files and standard graphic/vector data.



Import Excel and CSV databases for fast engraving of serial data jobs.



Enables standard engraving as well as surface levelling and hole drilling.



*shown with optional center vise



Hand-Held Control

Without the need for a computer, users can store job data and perform machine operations.

[Intentionally left blank for localization]